



New York Capital District Chapter

SUMMER 2019

DATES TO REMEMBER

June 6-9
June Retreat at Ararat

August 13
Deadline for
Summer Newsletter

September 17
Joint Meeting
at Beverwyck

Creative Stitches: Teaching Children to Stitch

CREATIVE STITCHES 2019 will be held at the Bethlehem Public Library, Monday through Friday, August 5-9 from 9:30 AM to noon. This program is in its 38th year, and serves children nine and up. We expect 15 to 20 new and returning stitchers each year. Please consider helping with this important program! We can always use more hands and encourage you to sign up to be a teacher and/or contribute food.



Be A Teacher: All members are welcome regardless of experience teaching children. This is a wonderful opportunity to share your love of needlework with students who are just beginning to learn about the world of stitching. We work as a team on projects already planned by lead teachers: Sandie Feck, Natalie Hart and Maggie Oldendorf. Sign up for as many days as you can.

Contribute Food: Provide snacks for 25 to 30 students and teachers for one day, Monday through Thursday.

Attend One Teacher Meeting - Date to be determined. See the projects, learn what is expected, and help put together project kits.

We will provide plenty of information and support. For more information or to sign up, contact Kathy Kuhrt.

- Kathy Kuhrt, Education Committee Chair.

CONTACT INFO

NATIONAL
Embroiderers'
Guild of America
www.egausa.org
1355 Bardstown Road
Suite 157
Louisville, KY 40204
(502) 589-6956
Fax (502) 584-7900

REGION
Metropolitan Region
www.metroega.org
Marge Kelly, Director
mwkelly0129@gmail.com

CHAPTER
NY Capital District Chapter
www.nycaptega.org
www.facebook.com/nycdcega
Sandie Feck, President
6 Evergreen Drive
Voorheesville, NY 12186
sandra@thefecks.com
(518) 765-3642

Newsletter
Ann Cohan, Editor
5 Albright Place
Delmar, NY 12054
gardengal345@yahoo.com





Facebook

Visit our Facebook page at:
www.facebook.com/nycdcega



Letter from the President

Hello Everyone,

I'm writing this letter the week before *Artistry in Stitches*, anticipating the event and all the beautiful work which will be on display. Of course, the time and energy devoted to preparing for our exhibit, as well as the actual work which will be needed to make it a success are very much on my mind at the moment. But I have to refer to the exhibit as though it has already taken place because this newsletter will be sent to everyone the week *after* the exhibit, at which time we will be basking in the knowledge that *Artistry in Stitches 2019* was a rousing success due to the preparations, hard work, dedication to detail, and support of our members. So, between now and then, (or should that be then and now?) I'm confident that all will be accomplished when and where needed, and because it would be most appropriate to do so, I thank each of you (in advance or retrospectively) for allowing us to display your beautiful work as well as your help in making our exhibit so memorable, and our chapter such a vibrant, successful, enjoyable group of extremely talented and dedicated members. Kudos to all!

I think I am not alone in anticipating a few leisurely weeks of summer in which to relax and regroup before our next big event — Creative Stitches Summer Camp. This year's camp will be held August 5–9 at the Bethlehem Public Library and, as usual, we will be needing lots of help. Please watch for announcements about what needs to be done to ensure the success of this year's class, and please do lend a hand, whether it's preparing for the camp, working hands-on with the girls during that week, or baking/supplying the daily snacks served to the participants. Contact Kathy Kuhrt if you are willing and able to lend a hand.

Remember: The North End meetings are suspended during the months of July and August. The Day Group meetings are suspended during the months of June, July, and August. The Beverwyck Group does continue its meetings, though — the first and third Tuesday of each month from 7–9:00 PM. I hope to see you there.

Warmest regards,

Sandie Feck

2018–2020 Board Members

OFFICERS

President Sandie Feck	Recording Secretary Ginger Iorizzo
First Vice-President Christene Thurston	Corresponding Secretary Agnes Bohl
Vice-President/Membership Louise Butler	Treasurer Mary Ann Lundy

BOARD OF DIRECTORS

Archives Deborah Hartz	Habitat for Humanity Liaison Pat Burns
Coordinator – Beverwyck Terry Case	Newsletter Ann Cohan
Coordinator – Day Fran Roscello	Outreach Terry Case
Coordinator – North End Doris Halvorsen	Programs Kathy Kuhrt
Education Kathy Kuhrt	Publicity Nancy Knowles
Exhibit Co-Chairs Kathy Kuhrt Nancy Knowles	Region Representative Helen O'Connor Website Coordinator Lynne Priestley

OTHER COMMITTEE CHAIRS

Email Communicator Dalene Cross	Hospitality – Day Co-Chairs Deborah Hartz Carol Newhart
Registrar Melody Brennan	





Spring 2019 Calendar

JUNE

4	Beverwyck	Stitch-In, Show & Share	10	Whitework & Cross Stitch**
6-9	Chapter	June Retreat at Ararat	12	Crewel
13	North End*	Stitch-In, Show & Share	22	Blackwork
18	Board	5:30 Meeting at Beverwyck	26	Studio Time
18	Beverwyck	Stitch-In, Show & Share		

Cancellation Policy

Beverwyck Evening Group: The coordinator, Terry Case, will send out an email if a meeting is cancelled.

Day Group: If the East Greenbush school district is closed or delayed, the meeting is cancelled.

North End Group: The coordinator, Doris Halvorsen, will send out an email if a meeting is cancelled.

JULY

2	Beverwyck	Stitch-In, Show & Share	8	Whitework
16	Beverwyck	Stitch-In, Show & Share	15	Cross Stitch
			24	Studio Time***
			27	Blackwork

AUGUST

5-9	Chapter	Creative Stitching – Teaching Children to Stitch Bethlehem Public Library	12	Whitework
6	Beverwyck	Stitch-In, Show & Share	14	Crewel
20	Beverwyck	Stitch-In, Show & Share	19	Cross Stitch
			24	Blackwork
			28	Studio Time***

SEPTEMBER

3	Board	5:30 Meeting @ Beverwyck	9	Whitework
3	Beverwyck	Stitch-In, Show & Share	11	Crewel
12	North End	Stitch-In, Show & Share	16	Cross Stitch
17	Chapter	Joint Meeting at Beverwyck – Finishing Techniques with Ruth Mehlenbacher	25	Studio Time***
18	Day Group	Stitch-In, Show & Share	28	Blackwork
26	North End	Stitch-In, Show & Share		

* North End – June meeting will be at Clifton Park-Halfmoon Public Library.

** The June 10th combined Whitework and Cross Stitch Plus meeting will be held at the E.Greenbush Library from 10-2.

*** Studio Time – Locations for July, August and September meetings to be determined.





Beverwyck Evening Group

7–9 PM every 1st & 3rd Tuesday

Community room of the Terrace at Beverwyck Retirement Community, 41 Beverwyck Lane, Slingerlands



From Krumkill Rd turn onto Beverwyck Lane (at the bounding deer sign just east of Blessing Rd), and then turn into the second driveway on the right. As you pull in you will see the entrance to the community room directly across from the driveway. In general, the 1st meeting of the month is a stitch-in (bring whatever you are working on), and the 2nd meeting is a program meeting.

Coordinator: Terry Case

Day Group

10–2 PM every 3rd Wednesday (Sept–May)

Blooming Grove Reformed Church, 706 Bloomingrove Dr, Defreestville



From the West (Albany, Delmar, Schenectady, etc.) take I-90 East to Exit 8 (Rt 43 Defreestville– second exit after crossing the Hudson River). Follow the very long exit ramp to the first light (Washington Ave) and turn right. The road comes to a “T” with a stop sign; turn right onto Bloomingrove Drive; church is on your right. Come in double doors at far end of porch; meeting room is to the left. From all other areas where you do not need to use I-90; from Rt. 4 turn onto Bloomingrove at the light near CVS and Stewart’s; just north of Home Depot. Church is on the left.

Coordinator: Fran Roscello

North End Group

6:30–9 PM on the 2nd & 4th Thursday (Sept–June), barring holidays.

St. George’s Episcopal Church, 912 Rte 146, Clifton Park



Take I-87 (Northway) to exit 9 (Rte.146W). Go west for approximately 1+ miles during which you will go through 5 traffic lights (including the exit ramp). The 5th light is the intersection of Moe Rd. Just past this intersection, the church complex will be on the left, set back from the road. Use the second entrance to the church. As you face the church, we meet in the building to the left (Parish Hall).

Coordinator: Doris Halvorsen

Study Groups and Studio Time

Study Groups and Studio Time are open to all members and offer unstructured time to gather with other chapter members for stitching and socializing. Study Groups encourage exploration and knowledge sharing of a particular type of stitching. Check the Calendar page for exact meeting dates.

Blackwork Study Group

Fourth Saturday of the month; 10:00 AM – 2:00 PM
Meeting location is determined by the hostess.

Contact: Fran Roscello

Crewel & Surface Embroidery Study Group

Second Wednesday of the month; 10:00 AM – 2:00 PM
Meeting location is determined by the hostess.

Contact: Mary Willmott

Cross Stitch PLUS Study Group

Third Monday of the month; 10:00 AM – 2:00 PM
Meetings at the East Greenbush Library. Bring your lunch and your stitching—come for part or all of the meeting time. Please RSVP if you plan to attend.

Contact: Lynne Priestley

Studio Time

Fourth Wednesday of the month; 10:00 AM – 2:00 PM
Meetings at the East Greenbush Library. Bring your lunch; hot water for beverages is provided.

Contact: Sherry McCredie

Whitework Study Group

Second Monday of the month; 10:00 AM – 2:00 PM
Meeting location is determined by the hostess.

Contact: Doris Halvorsen

Directions to East Greenbush Library

located on Michael Rd, just east of Rtes 4 & 151

From 1-90, take Exit 9, then turn south onto Rte 4; at the rotary go ¾ of the way around onto Rte 151 (like a left turn). Turn right at the next traffic light onto Michael Rd and you will see the library on your right.

From Rtes 9 & 20 (Columbia Turnpike), take Rte 4 North to rotary at Rte 151. Take first right onto Rte 151, and then proceed as above.





JOINT MEETING AT THE BEVERWYCK

Tuesday, September 17

Finishing Techniques with Ruth Mehlenbacher

Save
the
Date!

6PM Picnic Supper | 7PM Presentation

Ruth is a seamstress and needlework finisher. She lives in the area and has beautifully finished many of our member's stitched work into pillows, ornaments, carry bags and more. Come to see examples of her work and get ideas and tips to use for sewn finishes. Whether you are running out of wall space, looking for alternative finishing ideas or just interested in an evening out with fellow stitchers, you will enjoy this meeting.

Exhibit Update

ARTISTRY IN STITCHES 2019 was our most successful exhibit to date. Preliminary estimates show a significant increase in attendance and revenue. Of special note, we had a lot of interest in joining our chapter. Three signed up during the exhibit and several more are expected to follow suit. Those are the best signs of success.

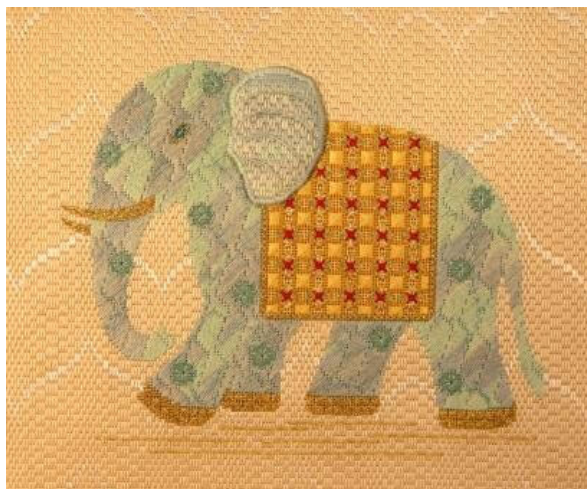
Special thanks to all who worked tirelessly behind the scenes in preparation for the exhibit. Lynne Priestley and her team managed the registration process with Diane Madrigal (on-line registration and technical help) and Nancy Knowles (exhibit program layout). The display committee, Ann McMillan, Agnes Bohl and Melody Brennan planned the display process. All those 350 pieces were carefully hung or placed by Ann and Agnes, Verna Chapman (memorials), Ann Cohan, Sandie Feck, Linda Freedland, Virginia Huerfeld and Donna Logan. Maggie Oldendorf guided the Needlework Closet pre-work. Over many long days, Maggie, Verna Chapman, Sandie Feck, Lu Ann Scherer, Carol Newhart and Fran Roscello sorted and priced a huge assortment of needlework treasures. Thanks also to Helen O'Connor for allowing us to store and work on those boxes of donated treasure in her home.

No less important was the work done by Nancy Knowles on publicity, Mary Willmott for organizing the Preview Party (with great food and music from Pinebush Players), Jane Stevens coordinating hostesses and demos, and Terry Case managing intake of all exhibited items and their return.

Thank you to all volunteers, stitchers and supporters of this event.

— Kathy Kuhrt and Nancy Knowles, Exhibit Co-chairs

GROUP CORRESPONDENCE COURSE



Maharajah's Elephant with Mary Long

Beginning in September, we will be stitching the Maharajah's Elephant, one of EGA's Group Correspondence Courses (GCC). This looks like a really fun canvas piece, with lots of different stitches including tent, rice, eyelet, swirl, alternating Scotch, mosaic, Rhodes, satin, and brick.

We will be applying for the Region Grant, which will cover the cost of the registration fee. You will need to pay a \$40 text fee and you must supply your own materials.

Visit the EGA's National website at <https://egausa.org/courses/maharajahs-elephant/> to learn more about this project and see the supply list. Use the link at the bottom of that page to find more information about the Group Correspondence Course program and other available projects.

Monthly group sessions will be set up to accommodate participants. Registration deadline is June 14, 2019. Please email Ginger Iorizzo if you are interested.





June Retreat

Now that the hard work of the Artistry in Stitches exhibit is over it is time to kick back and enjoy a stitching retreat. We now have 18 weekenders and four day-trippers registered. Members are welcome to sign-up until May 30.

The retreat will be at the Ararat Center in Greenville, NY, just off Route 32, 18 miles south of Delmar. Dates are June 6-9 for those who select the four-day option and June 7-9 for the three-day retreat. Costs include all meals and meal gratuities though housekeeping gratuities are up to the individual. See the coupon on page 10 for pricing details.

Meals for the four-day option starts with dinner on Thursday and includes all meals for the rest of the weekend. The meals for the three-day option start with dinner on Friday. Snacks will be served every evening. Coffee, tea, hot chocolate, juices and water are included and available throughout the day, often with fresh fruit. Breakfast and lunch are served on Sunday and the retreat will end at 3:00 PM.

If you are interested in attending the retreat, please email me and let me know your preferences.

- Helen O'Connor, Retreat Coordinator

Largest Selection of Cross Stitching Supplies in Dutchess County

Deer Hill Farm

Cross Stitching

Open Tues, Wed, Fri 10am - 5pm
Thurs 10am - 7pm Sat 10am - 4pm

Country Plaza, 1225 Rt. 9G, Suite D
Hyde Park, NY 12538 ♦ 845-229-0246

Pat Athanas email: deerhillfarmxs@optimum.net

Hemmers Needed

Peebles Island Resource Center, home of the Bureau of Historic Sites, has reached out to our chapter for help with a very special project. They plan to replace the curtains and valances in the dining room of the Ogden Mills Mansion at the Staatsburgh Historic Site, near Poughkeepsie, NY. They would like two to four volunteer stitchers to come to Peebles Island on Tuesdays, Wednesdays and possibly Thursdays, from 9 AM to 3 PM (hours can be flexible) to hem.

Our chapter has a long history of volunteering at Peebles Island. This should be an interesting and worthwhile opportunity for members to share their time and talents. The Ogden Mills Mansion is one of those huge extravagant homes built by the wealthy in the late 1800s. You can learn more about the home at <https://parks.ny.gov/historic-sites/25/details.aspx>.

Peebles Island Resource Center is the headquarters of the Bureau of Historic Sites, which is part of NYS Parks, Recreation and Historic Preservation. Established in 1972, the bureau provides technical support to New York's state-owned parks and historic sites. Located in a rehabilitated factory complex, the bureau helps to safeguard New York's rich heritage through a variety of projects and programs that document, preserve, and interpret historic, cultural, and natural resources at state parks and historic sites. Take a look at <https://parks.ny.gov/historic-preservation/bhs/> to learn more about Peebles Island.

If you are interested, please contact me and let me know what days you would be available. You don't need to commit for the entire time.

I am hopeful that we can help Peebles with this project and continue our long-standing relationship.

- Terry Case, Outreach Coordinator





Membership Updates

Additions

Mikki Brassard
 Darlene Dessormeau
 Joanne DiStefano
 Nancy Newkirk
 Terri Pittman
 Linda L. Smith



Founders Fund

The Founders Fund was set up years ago as a memorial fund for the New York Capital District Chapter of EGA. Tax deductible contributions can be made by anyone (members or non-members) in memory of, or in honor of a special person. The money in the Founders Fund is used for educational programs and to promote community awareness of the needle arts.

If you or someone you know would like to make a memorial contribution to our chapter, please contact the Treasurer, Mary Ann Lundy.

Membership Roster

The full membership roster can be found on the **Members Only** page of our website at www.nycapega.org. This online version is updated quarterly and provides the most up-to-date information.

EGA E-News

EGA E-News and other online communications from National are an opt-in service. If you're not receiving these valuable communications and would like to, you need to give permission by emailing Tonya at typarks@egausa.org.

2019 EGA National Seminar Gateway to Stitching

October 30 – November 3, 2019

Hosted by the Heartland Region
Marriott St. Louis Grand in St. Louis, MO

Registration: March 16 – July 31, 2019.

www.egausa.org/event/gateway-to-stitching-2019-seminar

2020 Mid-Eastern Seminar Through the Stitching Glass

May 15 - 17, 2020

Corning, New York

www.mideasternregionega.org/index.html

2020 EGA National Seminar Boston Stitch Party

September 4–8, 2020

Sheraton, Back Bay Boston, MA

2021 EGA National Seminar

September 1–9, 2021

Chicago, IL

2022 EGA National Seminar to be hosted by the Metropolitan Region

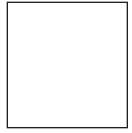
More details to come!

Updating Your Contact Information

CHAPTER: If your contact information has changed, please send the updates to Membership Chair Louise Butler at louisebutler15@gmail.com or 518-280-1512.

NATIONAL: Members are also responsible for reporting their address changes to National. The process is easy. Go to www.egausa.org and click on “Forms/Guides/Manuals” under MEMBERS ONLY. The Change of Contact Information form is at the top of the right-hand column under “General.”





RETURN SERVICE REQUESTED



June Stitching Retreat at Ararat Center

Thursday-Sunday, June 6-9, 2019

Registration Deadline is May 30

Name: _____

Phone: _____

Room Choice: ___ Single ___ Double ___ Triple

Roommate's Name(s): _____

Four-day Option: Single - \$448 Double - \$328 Triple - \$293

Three-day Option: Single - \$299 Double - \$219 Triple - \$195

Send check (made out to NYCDCEGA) to Helen O'Connor

Included is SASE for my confirmation OR

Email my confirmation to: _____

___ You are registered for the June 2019 Stitching Retreat.

*The mission of
The Embroiderers' Guild of America
is to inspire passion for the needle arts
through education and the celebration
of its heritage.*

**We welcome those
of all skill levels and interest
in any needle art technique.**

