



## DATES TO REMEMBER

**September 18**  
Metropolitan Region  
Virtual Lecture  
with Trudi Jacobson

**September 28**  
Joint Meeting

**October 13**  
Zoom Meeting  
with Dawn Donnelly

## CONTACT INFO

**NATIONAL  
Embroiderers'  
Guild of America**  
[www.egausa.org](http://www.egausa.org)  
1205 E Washington St,  
Suite 104  
Louisville, KY 40206  
(502) 589-6956  
Fax (502) 584-7900

**REGION**  
Metropolitan Region  
[www.metroega.org](http://www.metroega.org)  
Maria Hall, Director  
mariathall@msm.com

**CHAPTER**  
**NY Capital District Chapter**  
[www.nycapcega.org](http://www.nycapcega.org)  
[www.facebook.com/](http://www.facebook.com/nycdcega)  
[nycdcega](http://nycdcega)

Nancy Knowles, President  
nycdeganancy@gmail.com  
(518) -708-3558

**Newsletter**  
Ann Cohan, Editor  
5 Albright Place  
Delmar, NY 12054  
gardengal345@yahoo.com

**Joint Meeting:**  
Talk on Antique Samplers by Marilyn Sassi

Wednesday, September 28, 2022 | Bethlehem Lutheran Church in Delmar

**6:30 – Picnic Supper | 7:00 – Presentation**

One of the pleasures of going back to in-person meetings is being able to hold our annual Joint Meeting. The meeting this year will be our first since 2019.

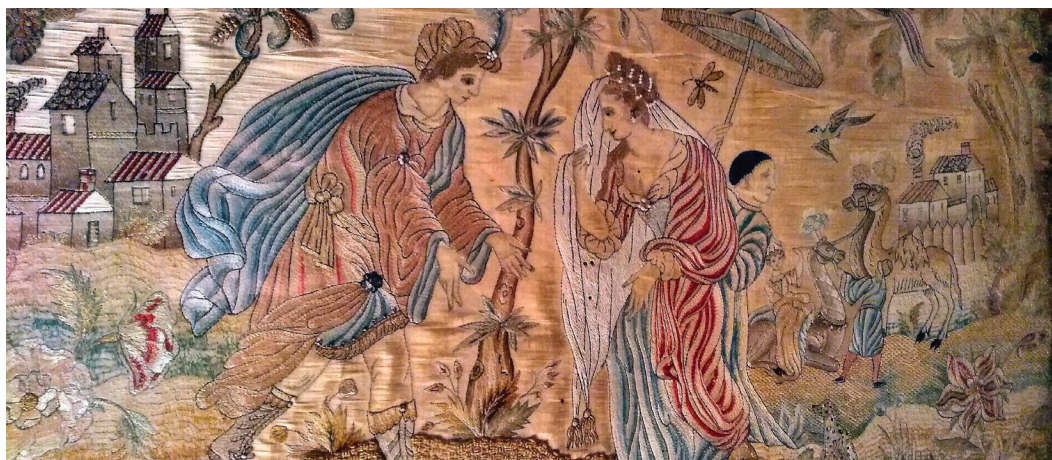
We will be going back to the traditional format—a picnic followed by the speaker's presentation. I have always felt the picnic is just as important as the talk. It allows members to reconnect with each other which is really something that can't be done with Zoom. We have been fortunate with our speakers as well. Over the years, some very interesting topics have been presented. Doll making, couture clothes decorating and the trials of teaching on the road are just a few that come to mind.

The Terrace at Beverwyck is no longer available as a venue since the residents need to be protected from outside exposure as much as possible. Instead, we'll gather at the Bethlehem Lutheran Church, 85 Elm Avenue, Delmar. The hall is very roomy with plenty of large round tables and should work very well.

The meeting will be held on Wednesday, September 28, starting at 6:30pm with a picnic. Bring a sandwich or something light. Decaf coffee will be available and desserts will be provided by members. Please feel free to bring some goodies to share.

The presentation will start at 7 pm. Marilyn Sassi will speak to us about antique samplers and may bring some of her own. Marilyn is a professor at both Hudson Valley Community College and Schenectady Community College. She has a degree in Fine Arts from Russell Sage College and is an expert in regional history and antiques. Marilyn resides at Teller House in the Schenectady Stockade and has filled it with many antiques. I'm really looking forward to this evening and hope to see you there!

- Terry Case, Programs Chair



Detail of a silk on silk English needlework picture with seed pearls and spangles ca. 1680.

+x



## 2022–2024 Board Members

### OFFICERS

<b>President</b> Nancy Knowles	<b>Recording Secretary</b> Maryann Gibson
<b>First Vice-President</b> Ginger Iorizzo	<b>Corresponding Secretary</b> Doris Stoll
<b>Vice-President/Membership</b> Agnes Bohl	<b>Treasurer</b> Jennifer Paperman

### BOARD OF DIRECTORS

<b>Archives</b> Deborah Hartz	<b>Outreach</b> <i>Vacant</i>
<b>Coordinator – Beverwyck</b> Terry Case	<b>Parliamentarian</b> Fran Roscello
<b>Coordinator – Day</b> Fran Roscello	<b>Programs</b> Terry Case
<b>Coordinator – North End</b> Doris Halvorsen	<b>Publicity</b> <i>Vacant</i>
<b>Education</b> Trudi Jacobson	<b>Region Representative</b> Helen O'Connor
<b>Newsletter</b> Ann Cohan	<b>Website Coordinator</b> Lynne Priestley

### OTHER COMMITTEE CHAIRS

<b>Creative Stitches (Education)</b> Maggie Oldendorf	<b>Hospitality – Day Group</b> Maryann Gibson
<b>Email Communications</b> Ginger Iorizzo	<b>Needlework Closet (Exhibit)</b> Maggie Oldendorf
<b>Exhibit</b> <i>Vacant</i>	<b>Registrar</b> Melody Brennan
<b>Habitat for Humanity Liaison</b> Joann Ryan	<b>Summer &amp; Fall Retreats</b> Helen O'Connor

## Letter from the President

Dear Members,

I am excited! The Program Committee and the Group leaders have been very busy. Please read the newsletter carefully as there are activities planned for each month. Locations have been secured through December for in-person meetings once a month for Beverwyck, Day, and North End groups. Zoom meetings will continue for the second meeting of the month. Activities are planned through December and the Program Committee is beginning to plan for the spring. The Retreat in September is definitely going to happen and day-trippers can now sign-up. Our Chapter's fall picnic is a great time to gather, catch up with stitching friends and enjoy a short program.

I look forward to seeing all of you!

*Nancy*

## Celebration and Recognition of Achievements, Skills, and Talents

Our chapter has always been active with sharing our skills and talents. Moving forward, I'd like to highlight individuals in our chapter that have shared (or will be sharing) their talents with others.

This quarter's celebrations:

**Christene Thurston** was the Metropolitan Region's winner of EGA's 2022 Gold Thread Award.

**Trudi Jacobson** will be giving a lecture (via Zoom) for the Metropolitan Region on Sunday, September 18, 2022. (Note the time has been changed to 3 pm.) The topic: Embroidery, Textile Arts, and Wikipedia: A Behind the Scenes Look. Trudi has also been asked to develop a new Goldwork Petite project which will be published in *Needle Arts* magazine and on the EGA national website.

**Jenni Paperman** exhibited her giant cross-stitch piece "The Four Arts of the Chinese Gentleman" at EGA's national seminar, Broadway Bound, in New York City.

Please send me your celebrations! Or let your group leader know and they will pass them on.

– Nancy Knowles, President



- 12** Whitework
- 12** Counted Thread Evening
- 14** Crewel
- 19** Counted Thread Day
- 24** Blackwork
- 28** Studio Time

Some group meetings and study groups are now being held in person. Contact the group coordinator if you have any questions.

<b>3</b>	<b>Board</b>	Zoom Meeting at 7pm	<b>10</b>	Whitework
<b>4</b>	<b>Beverwyck</b>	Stitch-In with Show & Share – Zoom	<b>10</b>	Counted Thread Eve
<b>13</b>	<b>Chapter</b>	Zoom Meeting – Dawn Donnelly	<b>12</b>	Crewel
<b>18</b>	<b>Beverwyck</b>	Nametags Program Bethlehem Pubic Library*	<b>17</b>	Counted Thread Day
<b>19</b>	<b>Day Group</b>	Nametags Program	<b>22</b>	Blackwork
<b>27</b>	<b>North End</b>	Nametags Program - Hybrid meeting Clifton Park Halfmoon Public Library*	<b>26</b>	Studio Time
<b>TBD</b>	<b>Chapter</b>	Flea Market		

Zoom invitation links will be emailed before events.

**Group and Joint Meetings:**  
Invites will be sent to all  
Chapter members.

Invites will be sent to registered participants.

Invites will be sent to group members. If you are interested in joining a study group, contact the coordinator listed on page 4.

Invites will be sent to board members.

<b>7</b>	<b>Board</b>	Zoom Meeting at 7pm	<b>9</b>	<b>Crewel</b>
<b>1</b>	<b>Beverwyck</b>	Stitch-In with Show & Share – Zoom	<b>14</b>	<b>Whitework</b>
<b>10</b>	<b>North End</b>	Nametags Program – Zoom	<b>14</b>	<b>Counted Thread Eve</b>
<b>15</b>	<b>Beverwyck</b>	Nametags Program Bethlehem Pubic Library*	<b>19</b>	<b>Blackwork</b>
<b>16</b>	<b>Day Group</b>	Nametags Program	<b>21</b>	<b>Counted Thread Day</b>
			<b>23</b>	<b>Studio Time</b>

## Board Meetings

All members are welcome at board meetings. If you're interested in attending, email Nancy and ask for the Zoom link.

<b>5</b>	<b>Chapter</b>	Zoom Meeting – Toni Gerdes	<b>12</b>	Whitework
<b>6</b>	<b>Beverwyck</b>	Stitch-In with Show & Share – Zoom	<b>12</b>	Counted Thread Eve
<b>8</b>	<b>North End</b>	Stitch-In with Show & Share Hybrid Meeting – Location TBD	<b>14</b>	Crewel
<b>20</b>	<b>Beverwyck</b>	Holiday Party Bethlehem Pubic Library*	<b>19</b>	Counted Thread Day
<b>21</b>	<b>Day Group</b>	Stitch-In with Show & Share	<b>28</b>	Studio Time

\* In-person meeting, 6:30 - 8:30 pm.



## Watch for Emails With Chapter News!

Please note that any emails from the chapter will come from the following email address: [nycapitaldistrictega@gmail.com](mailto:nycapitaldistrictega@gmail.com). Please add this address to your address book and/or safe sender list in your email program. You can also set up an email filter to automatically place all of your emails from this address into a separate folder.

Emails from this address often contain important chapter information and updates. We don't want anyone missing out on important chapter news!

### Beverwyck Evening Group

Meetings in the Albany area  
on 1st & 3rd Tuesday

Meetings will be a mix of Zoom (7–9 pm)  
and in person (6:30–8:30 pm).  
Check the calendar on page 3 for specifics.

Coordinator: Terry Case



### NOW MEETING IN PERSON!

#### Day Group

10–2 PM every 3rd Wednesday  
(Sept–May)

Blooming Grove Reformed Church,  
706 Bloomingrove Dr, Defreestville

Coordinator: Fran Roscello



### North End Group

Meetings in the Clifton Park area  
on the 2nd & 4th Thursday  
(Sept–June), barring holidays.

Meetings will be a mix of Zoom (7–9 pm)  
and in person (6:30–8:30 pm).  
Check the calendar on page 3 for specifics.

Coordinator: Doris Halvorsen



## Study Groups and Studio Time

Study Groups and Studio Time are open to all members and offer unstructured time to gather with other Chapter members for stitching and socializing. Study Groups encourage exploration and knowledge sharing of a particular type of stitching. If you are interested in joining a study group, contact the group coordinator listed below.

Study group invites will be limited to current members of the group. Check the Calendar page for exact meeting dates.

### Blackwork Study Group

Fourth Saturday of the month; 10 AM – 2 PM

Contact: Fran Roscello .

### Crewel & Surface Embroidery Study Group

Second Wednesday of the month; Start at 10 AM

For meeting location or Zoom invite,  
contact Mary Willmott

### Counted Thread Study Group (formerly known as Cross Stitch PLUS)

#### Day Meetings

Third Monday of the month; 10 AM – 2 PM

#### Evening Meetings

Second Monday of the month; 7 PM – 9 PM

Contact: Lynne Priestley .

### Studio Time

Fourth Wednesday of the month; 10 AM – 12 PM

Contact: Sherry McCredie .

### Whitework Study Group

Second Monday of the month; 10 AM – 12 PM

Contact: Doris Halvorsen

## Membership Roster

The full membership roster was recently updated and can be found on the Members Only page of our website at [www.nycaptega.org](http://www.nycaptega.org). If you need help accessing the Members Only page, contact Lynne Priestley.







## PROGRAMS

### Nametags

#### September Meetings

Patterns Available

#### October & November Meetings

Work on nametags

As we return to in-person meetings we need to start wearing nametags again. But perhaps you've misplaced yours, are ready for a new look or as a newer member haven't made one yet!

During the September meetings, group leaders will have several nametag patterns for you to choose from. A variety of techniques will be available.

During the October and November meetings you'll be able to work on your nametag. Help will be available if needed.

Supplies: Please bring fabric and threads from your stash, needles, scissors, and hoop and magnification if you need it.

### ZOOM

#### What Inspires Us Dawn Donnelly

Thursday, October 13

7:00 pm

Have you ever wondered where needlework teachers get their ideas or what inspires them? If so, please join us at 7 pm on October 13 for this online lecture by needlepoint designer and teacher Dawn Donnelly of [THREADUP](#). Dawn will give us a bit of insight into what teachers may be thinking when they come up with a design that seems to tell a story.

Dawn Donnelly is a mixed-media artist who enjoys incorporating other forms of art within needlepoint. She holds a teacher certification in canvas with the National Academy of Needlearts (NAN) and teaches nationally and locally for NAN, American Needlepoint Guild (ANG), and EGA. Dawn has been recognized for her excellence of work in numerous exhibits. She is the author of the book *Transformative Stitching: Needlework on the Diagonal*, and several of her articles have been published in *Needlepoint Now* and *Needle Pointers*.

Dawn is scheduled to teach The B Sampler, an on-line class, for EGA in January 2023. If you are interested in this on-line class more details can be found here: <https://egausa.org/courses/b-sampler/>. Note that registration opens September 7.

### ZOOM

#### Additions to Stitching Toni Gerdes

Monday, December 5

7:00 pm

Toni Gerdes will present our December Zoom lecture and hopefully expand your stitching horizons. She will speak about exploring new threads and other techniques that can be added to your stitching projects. Included are embellishments, needlefelting, appliqué and a special 'Wacky' copper lace technique. There will be slides demonstrating all of the above as well as ways to use them in your stitching.

Toni Gerdes of [Toni Gerdes Needlearts](#) holds a Level II Teacher's Certification from NAN specializing in Canvas Embroidery. She currently serves on the Board of NAN as the Director of Education. She is also past president of Milehigh Chapter of ANG. She has been published in *Needle Pointers*, *Needlepoint Now* and *Needle Arts*. Toni has taught for NAN, EGA and ANG as well as guilds and shops and has received numerous awards for her designs.

#### 2023 EGA National Seminar Boston Stitch Party

September 1-5, 2023

Sheraton, Back Bay Boston, MA

Early Registration for ALL EGA members has started and closes on Monday, September 26, 2022. Early registration can be processed either online or by mail.

Hosted by the New England Region.

<https://egausa.org/event/boston-stitch-party-ega-national-seminar-2023/>





## EDUCATION OPPORTUNITIES

### EGA National

#### Virtual Lecture Series

The Virtual Lecture series continues this fall, though there aren't many yet listed. The capacity for one of these lectures is just 100 people (to be 500 people as of 2023). In order to be as fair as possible, EGA holds a drawing for those who will be invited to attend, so keep an eye out for the date (lottery entry and event date) for any of these you hope to attend.

**Creating Needlework Maps with Catherine Jordan**, Sunday, October 9 at 1:00 pm, lottery registration September 12-19, registration reminder sign-up: <https://egausa.org/courses/virtual-lecture-creating-needlework-maps/>

#### New Online Sampler Class

Registration for what sounds like a fun sampler class begins on September 7: the B Sampler class taught by Dawn Donnelly. The focus is on stitches that contain a B in their names, such as Butterfly Chain, Balloon Satin, and Byzantine. If you'd like to sign up for a reminder to register, go to <https://egausa.org/courses/b-sampler/>

### EGA Metropolitan Region

I (Trudi Jacobson) will be offering the next Metropolitan Region virtual lecture. Here is an excerpt from the details that were in an email message forwarded by Ginger Iorizzo:

*The Metropolitan Region's upcoming virtual lectures are: Trudi Jacobson will be speaking about Embroidery, Textile Arts, and Wikipedia: A Behind the Scenes Look, on Sunday, September 18, 2022, beginning at 3 pm. Everyone knows of Wikipedia, and either takes it for granted or is suspicious of its content. Or both! Results from Wikipedia often show up near the top of search engine results, and Alexa gets many of "her" answers from it. In this interactive lecture, we'll explore the good, and the not-so-good aspects of Wikipedia. We will then focus on what is available in embroidery and on textile arts more generally. We'll go behind the scenes: who is writing the content? Who is changing it? Can articles be trusted? And you'll be introduced to the Wikiproject Textile Arts, the content that needs enhancement, and some simple ways to jump in and help if you are interested. You will be briefly introduced to other Wikimedia projects that might interest you.*

If you are interested in trying out a bit of editing during the session, sign up for a Wikipedia account in advance at the [Create Account](#) site—it only takes a minute. I hope you will be able to make it!

### San Francisco School of Needlework and Design (SNAD)

**September 28:** [Dr. Lynn Hulse](#), a Fellow of the Society of Antiquaries of London and co-founder of [Ornamental Embroidery](#), will "explore the figurative wall hangings stitched by the RSAN between 1875 and c. 1908 after pre-Raphaelite painter and designer, Edward Burne-Jones (1833-1898) textile designs." [Register here.](#)

**October 12:** [Helen M. Stevens](#) of Bury St. Edmunds, is a world-renowned hand embroiderer, designer, and best selling author of 12 wonderful embroidery books. In 1981 she began her very own business and created her formal practice the [True Embroideries Studio](#). She has done commissions for clients such as Harrods of Knightsbridge, The Stanley Gibbons Gallery, the NHS, RSPB, the House of Commons, and the British Museum; the latter would spark her later interest in Anglo Saxon embroidery. [Register here.](#)

**October 26:** In 2010, [Maayankraj Singh](#) recorded 'Oral History of Costume Traditions' as a written thesis, through extensive travel and research. These endeavors have sensitized him greatly, not just to the nuances of his profession, but also to the seeds of future potential therein. Maayankraj Singh's inspiration has been the rich repertoire of hand embroidery traditions of India & Europe and also the regal legacy of one's family. [Register here.](#)

### Online Learning Opportunity

In each column, I will feature an online learning platform that you might not (or might) be aware of. The goal is to identify sources of interesting embroidery instruction.

**Udemy:** You may be familiar with Craftsy and Creative-Bug, but have you heard of [Udemy](#)? Their "About" page features some taglines, including "We share knowledge with the world" and "Changing learning for the better." There is a very wide range of online courses on this platform, professional and personal, with a really good range of art- and craft-related courses. I conducted a search on "embroidery" and got 138 courses as a result. You would have to check them over to see which might be on target for you, but the

*Continued on page 7*





**163 Delaware Ave  
Delmar**

Across from the  
Hannaford Shopping Plaza

**Wed & Sat 10-4 pm  
Thurs 1-6 pm**

Open stitch during store hours  
and on Wed Evenings 6-8 pm

## For the Stitcher's Soul

***Our mission is simple...  
to keep the different needle arts alive  
by providing quality stitching products  
and by sharing the love of stitching  
with anyone who wants to learn.***

Fabric, Threads, Charts, Accessories, Classes  
Slowly adding needlepoint, needle punch and embroidery

**Retreat Oct 21-23, Limited seating – Details on website**

**New classes: See Calendar of Events on website**

*Instructors in embroidery, Needlepoint and Blackwork wanted.*

*Contact Terri if you're interested in being an instructor.*

Owner: Terri Pittman | 518-898-9416 | [www.forthestitcherssoul.com](http://www.forthestitcherssoul.com) | [forthestitcherssoul@gmail.com](mailto:forthestitcherssoul@gmail.com)

## Education Opportunities

*Continued from page 6*

topic filters give a good sense of the different focuses: sewing, jewelry, fashion, crafting and more. I saw courses that range from 35 minutes to 5 hours—quite a range. Some highly rated courses are:

- [Introduction to Tambour Embroidery](#) (36 minutes)
- [Hand Embroidery: Blend Colors in Your Embroidery Piece](#) (1 hour)
- [Aari Embroidery: Basic 22 Stitches](#) (2 hours)

Prices vary, but it seems that more often than not, many of the courses are on sale for \$12.99 or so, even less if you can find a coupon code. One feature I really appreciate is that you can preview the course, with two or three of the class segments available for you to watch for free. Be careful. While a number of the embroidery courses have ratings above 4 (out of 5), I did notice more than I expected with 3.4 or 3.5 ratings. Also, some are not in English. Previewing the course should help you to make informed decisions. While I haven't yet taken any embroidery classes, I've taken some art-related ones, and I've been pleased. Also, new classes seem to be added regularly. You might find it worthwhile to check out some of the options.

— Trudi Jacobson, Education Chair

***Largest Selection of Cross Stitching Supplies  
in Dutchess County***



Open Tues - Sat 10am - 4pm

Country Plaza, 1225 Rt. 9G, Suite D  
Hyde Park, NY 12538 • 845-229-0246

**Pat Athanas email: [deerhillfarmxs@optimum.net](mailto:deerhillfarmxs@optimum.net)**



+x

Like us on  
**Facebook**