

# New York Capital District Chapter

FALL 2023

## DATES TO REMEMBER

**September 23**

Joint Meeting

**October 1**

Registration Deadline  
for Dogwood Assisi

**November 3**

Stash Sale

**November 6**

Newsletter Deadline

**December 1**

Registration Deadline  
for Herringbone and Holes

## CONTACT INFO

**NATIONAL**  
Embroiderers'  
Guild of America

[www.egausa.org](http://www.egausa.org)

1205 E Washington St,  
Suite 104

Louisville, KY 40206

502-589-6956

Fax: 502-584-7900

**REGION**

**Metropolitan Region**

[www.metroega.org](http://www.metroega.org)

Maria Hall, Director  
mariathall@msm.com

**CHAPTER**

**NY Capital District Chapter**

[www.nycapega.org](http://www.nycapega.org)

[www.facebook.com/](https://www.facebook.com/nycdcega)

[nycdcega](https://www.facebook.com/nycdcega)

Nancy Knowles, President  
nycdeganancy@gmail.com

518-708-3558

**Newsletter**

Ann Cohan, Editor

5 Albright Place

Delmar, NY 12054

gardengal345@yahoo.com

## Joint Meeting:

## Talk on Traditional Japanese Embroidery by Christene Thurston

**Saturday, September 23, 2023**

**A Space For Art, 60 Remsen St, Cohoes**

**Noon – Picnic Lunch | 1:00 – Presentation**

This year's Joint Meeting will be held on Saturday, September 23 at our new venue, A Space for Art at 60 Remson Street in Cohoes. Parking is limited so please consider carpooling. You may park on the street at no charge or park in the small lot at the side of the building. Balloons will be on the doors as a guide.

The meeting will start at noon with a bring-your-own picnic lunch. Beverages will not be provided.

Please feel free to bring desserts — cookies, brownies, candy, etc. — to share.

Following lunch, Chapter member Christene Thurston will talk about her journey through the world of traditional Japanese Embroidery. This beautiful stitching technique originated more than 1600 years ago. You will hear about the fabrics, threads, and tools that are specific to Japanese Embroidery and learn its history and transformation into the twentieth century. Christene will also bring some of her beautiful finished pieces for you to admire.

## Nuidō – The Way of Embroidery

by Christene Thurston

The word Nuidō is made up of two parts: Nui, or embroidery and Dō, “the way.” More specifically, Nuidō refers to Traditional Japanese Embroidery.

In Japan there are many words that end with the letters Dō. The first part of the word represents the activity as a physical or technical means and the second part, the Dō, stands for the mental and spiritual means employed so that it becomes “the way.”

As an example, in Japanese, the word Sadō is comprised of Sa (tea) and Dō (the way). Sadō translates as the “art of the tea ceremony” but it means much more than drinking a cup of tea. In the midst of busy lives and harsh existence, the ritual has evolved to honor the beauty of the tea ceremony and is considered a high art form.

*[Continued on page 6](#)*

Above: Detail from Happy Anticipation and Nandina/Daffodil Circles  
© Japanese Embroidery Center  
Stitched by Christene Thurston





## 2022–2024 Board Members

### OFFICERS

<b>President</b> Nancy Knowles	<b>Recording Secretary</b> Maryann Gibson
<b>First Vice-President</b> Ginger Iorizzo	<b>Corresponding Secretary</b> Doris Stoll
<b>Vice-President/Membership</b> Lynne Priestley	<b>Treasurer</b> Jennifer Paperman

### BOARD OF DIRECTORS

<b>Archives</b> Deborah Hartz	<b>Outreach</b> <i>Vacant</i>
<b>Coordinator – Beverwyck</b> Terry Case	<b>Parliamentarian</b> Fran Roscello
<b>Coordinator – Day</b> Fran Roscello	<b>Programs</b> Terry Case
<b>Coordinator – North End</b> Doris Halvorsen	<b>Publicity</b> <i>Vacant</i>
<b>Education</b> Trudi Jacobson	<b>Region Representative</b> Helen O'Connor
<b>Newsletter</b> Ann Cohan	<b>Website Coordinator</b> Ginger Iorizzo

### OTHER COMMITTEE CHAIRS

<b>Creative Stitches (Education)</b> Maggie Oldendorf	<b>Hospitality – Day Group</b> Maryann Gibson
<b>Email Communications</b> Ginger Iorizzo	<b>Needlework Closet (Exhibit)</b> Maggie Oldendorf
<b>Exhibit</b> <i>Vacant</i>	<b>Registrar</b> Louise Butler
<b>Habitat for Humanity Liaison</b> <i>Vacant</i>	<b>Summer &amp; Fall Retreats</b> Helen O'Connor

## Letter from the President

Dear Members,

I can't believe that September is upon us. The summer flew by and now Halloween items are available for sale in all of our stores. Is this a trigger to pull out your fall and winter projects? Bring them as well as the projects you have been working on to our in-person (live) meetings. North End and Day Group begin meeting again in person in September. Please read the newsletter carefully for dates, times, and locations of all meetings and upcoming programs.

Welcome Barbara, Gale, and Melissa to our group. We are glad to have you join us.

Happy Stitching!

*Nancy*

## Where Do Your Dues Go?

Have you ever wondered how your EGA dues are used? Currently, all of us pay \$60 each year to belong to EGA and this amount has not changed in many years. Not all of it stays with the Chapter. Out of this \$60, \$17 stays with our local Chapter (NY Capital District), \$4 goes to the Region (Metropolitan), and the remaining \$39 is sent to National EGA. Whether you participate in them or not, EGA offers a large number of educational activities on a national, regional, and local level. Some are offered free of charge to the memberships and all others are subsidized by our dues. EGA offers us the opportunity to challenge ourselves and to sharpen our skills all the while doing this side-by-side with others who also love needlework. It offers us the opportunity to socialize and develop deep and lasting friendships.

Why is this being addressed at this time? National EGA has announced that the National dues will be increasing to \$55 each year beginning in January 2024. I encourage you to read Karen Hamilton's (President of National EGA) message in the latest issue of Needle Arts (September 2023) as she discusses the need for this increase.

Our Chapter's Board of Directors has been discussing the changes that National is bringing and how that affects the local Chapter. Please 'stay-tuned' for more information as we get closer to 2024.

— Nancy Knowles, President



- 7 Needlepoint
- 11 Whitework
- 11 Counted Thread Eve
- 13 Crewel
- 18 Counted Thread Day
- 27 Studio Time

<b>2</b>	<b>Board</b>	Zoom Meeting @ 7 pm
<b>3</b>	<b>Beverwyck</b>	Stitch-In, Show & Share (Zoom)
<b>12</b>	<b>North End</b>	Stitch-In, Show & Share (Zoom)
<b>14</b>	<b>Chapter</b>	Dogwood Assisi class (In Person)
<b>17</b>	<b>Beverwyck</b>	Stitch-In, Show & Share (In Person)
<b>18</b>	<b>Day Group</b>	Stitch-In, Show & Share (In Person)
<b>26</b>	<b>North End</b>	Stitch-In, Show & Share (In Person)

3	Chapter	Stash Sale
6	Board	Zoom Meeting @ 7 pm
7	Beverwyck	Stitch-In, Show & Share (Zoom)
9	North End	Stitch-In, Show & Share (Zoom)
15	Day Group	Stitch-In, Show & Share (In Person)
21	Beverwyck	Stitch-In, Show & Share (In Person)

4	Board	Zoom Meeting @ 7 pm
5	Beverwyck	Stitch-In, Show & Share (Zoom)
14	North End	Holiday Party (In Person)
19	Beverwyck	Holiday Party (In Person)
20	Day Group	Holiday Party (In Person)

**Beverwyck:**  
Bethlehem Pubic Library

**North End Group:**  
Clifton Park Halfmoon  
Public Library

**Day Group:**  
Blooming Grove  
Reformed Church

Zoom invitation links will be emailed before events.

Invites will be sent to all Chapter members.

Invites will be sent to registered participants.

Invites will be sent to group members. If you are interested in joining a study group, contact the coordinator listed on page 4.

Invites will be sent to board members.

**Beverwyck Evening Group:** The coordinator, Terry Case, will send out an email if a meeting is cancelled.

If the East Greenbush  
school district is closed,  
the meeting is cancelled.

The coordinator, Doris Halvorsen, will send out an email if a meeting is cancelled.

3



## New Study Group for Needlepoint

Do you like to do needlepoint and want to learn more? Have you admired the counted canvas work of other guild members? Our maybe you have admired or purchased a painted canvas but are unsure how to go about selecting stitches and threads. Then the new Needlepoint Study Group is for you.

This new study group will meet in conjunction with the ANG (American Needlepoint Guild) monthly meetings at the East Greenbush library on the first Thursday of the month from noon till 4 pm (unless otherwise noted). For questions or to be put on the message distribution list, send an email to Fran Roscello. Or just show up at the designated time. Note that the time will sometimes need slight alteration due to library activities.

## Beverwyck Evening Group

**Meetings in the Albany area  
on 1st & 3rd Tuesday**

Meetings will be a mix of Zoom (7-9 pm) and in person (6:30-8:30 pm). Check the calendar on page 3 for specifics.

**Coordinator: Terry Case**



## Day Group

**10-2 PM every 3rd Wednesday  
(Sept-May)**

Blooming Grove Reformed Church,  
706 Bloomingrove Dr, Defreestville

Day Group will be canceled  
if East Greenbush schools are closed.

**Coordinator: Fran Roscello**



## North End Group

**Meetings in the Clifton Park area  
on the 2nd & 4th Thursday  
(Sept-June), barring holidays.**

Meetings will be a mix of Zoom (7-9 pm) and in person (6:30-8:30 pm). Check the calendar on page 3 for specifics.

**Coordinator: Doris Halvorsen**



## Study Groups and Studio Time

Study group invites will be limited to current members of the group. If you are interested in joining a study group, contact the group coordinator listed below. Check the Calendar on page 3 for meeting dates.

### Blackwork Study Group

Fourth Saturday of the month; 10 AM - 2 PM

Contact: Fran Roscello

### Crewel & Surface Embroidery Study Group

Second Wednesday of the month; Start at 10 AM

For meeting location or Zoom invite,  
contact Mary Willmott

### Counted Thread Study Group (formerly known as Cross Stitch PLUS)

#### Day Meetings

Third Monday of the month; 10 AM - 2 PM

Meetings at Jenni Paperman's home

#### Evening Meetings - Zoom

Second Monday of the month; 7 PM - 9 PM

Contact: Lynne Priestley

### Needlepoint Study Group

First Thursday of the month; Noon - 4 PM  
East Greenbush Community Library

Contact: Fran Roscello

**New!**

### Studio Time

Fourth Wednesday of the month; 10 AM - 2 PM  
New meeting location!

For the Stitcher's Soul  
163 Delaware Avenue, Delmar

Contact: Sherry McCredie

### Whitework Study Group

Second Monday of the month; 10 AM - 12 PM

Contact: Doris Halvorsen

## Facebook

Visit our Facebook page at:  
[www.facebook.com/nycdcega](http://www.facebook.com/nycdcega)



Like us on  
**Facebook**



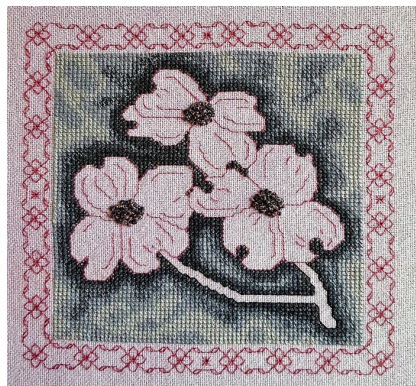




## PROGRAM NEWS

### Dogwood Assisi

Saturday, October 14, 10 am – 2 pm  
A Space for Art, 60 Remson St., Cohoes



This Assisi project will be the first class to be held in our newest meeting space, A Space for Art in Cohoes. Assisi work is an old Italian technique in which the background is filled in using cross stitch and the design is outlined but left unstitched. This is a small piece, approximately 6.5 inches square, that can be made into an ornament.

Because some members prefer even weave and others like Aida cloth, participants will provide their own fabric. We will use 28 ct. evenweave or 14 ct. Aida cloth. Regardless of fabric choice, the fabric should be 12 inches square to allow for seams. DMC floss will be provided.

Participants should also bring an 8 inch hoop or equivalent, a 24 or 26 tapestry needle, scissors, magnification and lighting as needed, and a lunch.

**Registration deadline is October 1.** The cost will be a teaching fee of \$5 per student. To sign up, send the registration coupon (on page 10) and your check to Louise Butler.

### Stash Sale and Donations!

Friday, November 3, 10 am – 4 pm  
Blooming Grove Reformed Church, Defreestville

Our next Stash Sale will be held on November 3 at Blooming Grove Reformed Church, the site of our Day Group meetings. The sale will run from 10 to 4 with the last hour being a bag sale. This is the first time we have asked our members for donations since our last Exhibit and Needlework Closet in 2019, so we expect a bountiful sale.

There are several ways you can help make the sale a success:

- Go through your stash and pull out any new or gently-used embroidery supplies you no longer need. Please keep in mind the donation guidelines on our website at [nycapega.org/donations-guidelines/](http://nycapega.org/donations-guidelines/). Your items can be given to Maggie Oldendorf, Fran Roscello, Doris Halvorsen or Terry Case.
- Share info about the sale with everyone you think might be interested. And bring a friend or two to the sale.
- Gather up your tote bags and come to the sale and shop! (Cash or checks only.)

If you have any questions, or if you'd like to help with the sale, please contact Maggie Oldendorf.

### ZOOM CLASS Herringbone and Holes

Mondays, 7–9 pm  
January–September 2024

Beginning in January, we will be offering a Zoom class — Herringbone and Holes. Lessons will be from 7 to 9 pm on the fourth Monday of every month for nine months. There are nine bands in this pretty pulled thread sampler, so we will be stitching one band a month. This is an EGA project and all the information, including instructions and the materials list, can be found on their website here: [egausa.org/app/uploads/2021/08/HERRINGBONE-AND-HOLES.pdf](http://egausa.org/app/uploads/2021/08/HERRINGBONE-AND-HOLES.pdf).

Stitchers will provide their own materials — fabric, threads, etc. — and Ginger Iorizzo will lead the class each month with guidance on how to stitch each band.

**Registration deadline is December 1.** The cost will be a teaching fee of \$5 per student. If you're interested in signing up, fill out the registration coupon on page 10 and mail it with your check to Louise Butler by the December 1 deadline.





[Continued from page 1](#)

## Nuidō – The Way of Embroidery

Similarly, Kendō, the art of Japanese swordsmanship, has transformed from a method of self-defense and fighting into a study where the use of the sword is polite and with respect for oneself and one's opponent. The graceful moves are considered to be a beautiful art.

There are three aspects to Nuidō: a) the acquisition of technical skills and knowledge, b) the development of sensitivity and awareness, and, c) the constant discovery of the spiritual components of the art of embroidery. When all three are accomplished together, the result is an attitude of peace, calm, and harmony. Great skill alone (or just technical achievement) does not produce art!

Many motifs used in Japanese Embroidery express specific meanings or celebrate special occasions. The crane is one of the most notable designs recognized on Japanese kimonos and other Japanese products. It represents new life and long life. Pine is an auspicious symbol of endurance, good luck and happiness. Flowers and all plant life are used to depict the different seasons. The narcissus announces the arrival of spring, bringing the year full circle; wisteria is typical of June and the morning glory is representative of late summer. Rice, an important harvest, is used to imply autumn.



Happy Anticipation and Nandina/Daffodil Circles  
© Japanese Embroidery Center  
Stitched by Christene Thurston

The study of Japanese Embroidery is one that will take the student on a journey of discovery. One can choose to follow the phases and work toward certification and the opportunity to become a teacher after the completion of Phase X, or complete the earlier phases and then select one of the hundreds of “non-phase” designs to apply their skill. Scrolling through the Japanese Embroidery Center’s gallery of designs is like going into a chocolatier and trying to decide between a Lindt Millefeuille Milk Chocolate Truffle, and, a La Maison Du Chocolat Dark Chocolate Truffle!

## Creative Stitches – August 2023

**F**or the first time since 2019 (due to the pandemic), we were able to hold our (previously!) annual Creative Stitches summer program at the Bethlehem Public Library. Our six students enjoyed learning basic embroidery stitches and then created their own designs for three projects: pincushions, cell phone pockets, and keepsake tins (think Altoid’s mint tins). The kids stitched their designs onto felt using #5 perle cotton. We were surprised to have two students returning from our last program in 2019! Because they were not new to embroidery, they worked on a more challenging project, a butterfly from Mary Corbet’s website that they stitched with 6-strand floss.

My warmest thanks to all our members who helped with the program this year: Fran Roscello, Ann Cohan, Donna Logan, Jenni Paperman, Maryann Gibson, Mary Willmott, and Nancy Knowles.

— Maggie Oldendorf, Creative Stitches Chair







## OUTREACH REPORT

### Peebles Island Project Wraps Up

This spring and summer our Chapter had the pleasure of helping reproduce the library draperies for the historic Mills Mansion at the Staatsburg Historic Site. This was the one of the homes of Ogden and Ruth Livingston Mills and is located near Hyde Park. The original draperies were created around the turn of the twentieth century. It's hard to believe they were still hanging but they were literally disintegrating and needed to be replaced.

Sarah Stevens, a conservator with the NYS Office of Parks, Recreation and Historic Preservation, supervised the project. Sarah found a company who were able to exactly reproduce the dark pink silk brocade fabric and matching tassel strips that were used in the original draperies. Our job was to attach inner and outer linings to the eighteen floor-to-ceiling panels and valances as well as attach the tassel strips to the edges.



Eleven of our members traveled to Peebles Island on Tuesday through Thursday from March to June to do the stitching. We all agreed this beautiful material was much easier to work with than the heavy velvet brocade dining room draperies we worked on several years ago. However, attaching the tassel strips was another story. The tassel strings kept getting caught in the sewing thread and caused much exasperation. Every project has its challenges.

The Mills Mansion Board visited on our last day to thank us for our work and to host a luncheon. They were very appreciative of all our work. A highlight of the day was the beautiful and delicious cake decorated to look like the fabric.

The draperies were hung at the Mansion in mid-July. The project volunteers have been invited to attend the official ribbon cutting on September 20.

— Terry Case, Outreach Chair

### Celebration and Recognition

This quarter we recognize the eleven members who shared their skill and time at Peebles Island to help reproduce the library draperies for the historic Mills Mansion at the Staatsburg Historic Site:

**Terry Case** (Coordinator), **Agnes Bohl**, **Ann Cohan**, **Ethel Cooper**, **Doris Halvorsen**, **Natalie Hart**, **Barbara Leafer**, **Nancy Newkirk**, **Nancy Sprissler**, **Christene Thurston** and **Bonnie Urso**.

Please send me your celebrations! Or ask your group leader to pass them on to me. ([nycdeganancy@gmail.com](mailto:nycdeganancy@gmail.com))

– Nancy Knowles, President

### 2024 EGA National Seminar – Preserving Needle Art

August 14–18, 2024 | Hilton Hotel, Atlanta, GA | [egausa.org/event/ega-national-seminar-2024/](https://egausa.org/event/ega-national-seminar-2024/)

Registration opens September 19, 2023 – First come, first served registration will eliminate the waiting period to receive class assignments. You will know immediately upon successful payment confirmation if you are in a class or not.





## EDUCATION OPPORTUNITIES FROM EGA NATIONAL

### Virtual Lecture Series

There are two key dates for each Virtual Lecture you plan to attend—the registration period and the actual date of the lecture. There is a \$5 fee to attend a lecture or to watch a recording, if available, after the lecture. Registration for the live lecture does not provide access to the recording. The link below for each event takes you to a reminder registration form if the registration period has not yet opened. It is also possible to opt to receive reminders for all upcoming virtual lectures—look for the check box.

- [The Plymouth Tapestry](#) with Donna Curtin on Sunday, September 10 at 1:00 pm. Registration is open through September 8 at 1:00 pm. “The Plymouth Tapestry is an heirloom embroidery commissioned by Pilgrim Hall Museum for Plymouth’s 400th anniversary commemoration. It is being created by artist Elizabeth Creeden and a group of volunteer stitchers in a multi-year undertaking.”
- [‘Este dechado’: Mastering Needlework in Mid-19th Century Mexico](#) with Dr. Lynne Anderson and Dr. Mayela Flores Enriquez on Sunday, October 14 at 1:00 pm. Registration September 18 – October 12 at 1:00 pm. “Drs. Lynne Anderson and Mayela Flores will introduce the world of Mexican sampler making, showcasing the unique features of Mexican “dechados” and discussing the important role of needlework in Mexican female education, including how this changed over time due to historical, cultural, and religious influences. They will then focus on the mid-19th century educational options for girls and young women, and the impact of a more secular educational system on learning needlework.”
- [Stitches in Time: Textile Conservation for the Needleworker](#) with Newbie Richardson on Saturday, November 11 at 1:00 pm. Registration October 16 – November 9 at 1:00 pm. This session “will focus on the unique needs of needlework, quilts, and embroidery in terms of preventive conservation, stabilization, display, and repair. I’ll provide information on hydrating, mounting, framing, wet and dry cleaning, and some repair techniques you can do at home.”

### Group Correspondence Course Lightning Rounds

GCC Lightning Rounds are available for individuals to register for without being part of a group. Each has its own cost. The ones listed here are available until November 30, 2023.

- [Beginner’s Hardanger](#) with Marion Scoular: “Students will learn the basic techniques of Hardanger with the option of stitching in a solid color or experimenting with Watercolours®.”
- [English Summer](#) with Cheryl Sharp: “Perfect your [stitching] skills while stitching a stunning interlaced heart featuring ripe strawberries and a Tudor rose.”
- [Shimmering Dreams](#) with Mona Hill: “...ever-larger sparkling squares rotate around a shiny central medallion to finish in a star silhouette.”
- [Daydreams](#) with Barbara Kershaw: “a correspondence course focused on Schwalm embroidery, a beautiful form of German whitework embroidery traditionally worked on an off-white even weave linen with white thread.”
- [Sweet Bag Sewed of Silver and Gold](#) with Melinda Sherbring: “you will stitch an embroidered bag like the ones that were in style in England from the mid-1500s to the mid-1600s.”

Keep in mind that lightning rounds are true to their name—they change quarterly and you have to register within the three month period they are available.

— Trudi Jacobson, Education Chair

TIP: Mark your calendars to check the EGA National website early each March, June, September, and December to see the latest GCC Lightning Rounds. You are sure to find something that peaks your interest. Go to [egausa.org/lightning-rounds/](https://egausa.org/lightning-rounds/) or look under Education | GCC Lightning Rounds from the main menu.

*The mission of The Embroiderers’ Guild of America  
is to inspire passion for the needle arts through education and the celebration of its heritage.*

We welcome those of all skill levels and interest in any needle art technique.







## For the Stitcher's Soul

***Our mission is simple...  
to keep the different needle arts alive  
by providing quality stitching products  
and by sharing the love of stitching  
with anyone who wants to learn.***

**163 Delaware Ave  
Delmar**  
Across from the  
Hannaford Shopping Plaza

**Wed & Sat 10-4 pm  
Thurs 1-6 pm**

Open stitch during store hours  
and on Wed Evenings 6-8 pm

Fabric, Threads, Charts, Accessories, Classes  
Slowly adding needlepoint, needle punch and embroidery

**New classes: See Calendar of Events on website**

*Instructors in embroidery, Needlepoint and Blackwork wanted.  
Contact Terri if you're interested in being an instructor.*

Owner: Terri Pittman | 518-898-9416 | [www.forthestitcherssoul.com](http://www.forthestitcherssoul.com) | [forthestitcherssoul@gmail.com](mailto:forthestitcherssoul@gmail.com)

## Membership Updates

### New Email

Jenni Paperman: [jennipaperman@gmail.com](mailto:jennipaperman@gmail.com)

### New Members

Barbara Bartling

Gale McCarthy

Melissa Test

*Welcome Barbara,  
Gale & Melissa!*

*Largest Selection of Cross Stitching Supplies  
in Dutchess County*



Open Tues - Sat 10am - 4pm

Country Plaza, 1225 Rt. 9G, Suite D  
Hyde Park, NY 12538 ♦ 845-229-0246

Pat Athanas email: [deerhillfarmxs@optimum.net](mailto:deerhillfarmxs@optimum.net)



